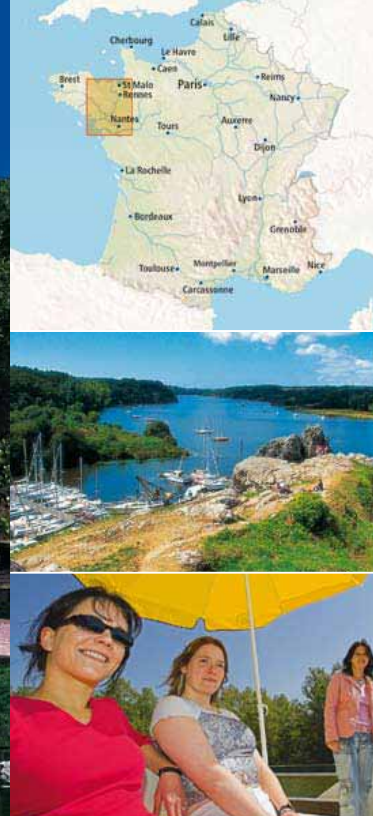


Brittany



Folklore, festivals and traditions

Josselin on the Canal de Nantes à Brest



FRANCE

Regional highlights

Soak up the Celtic charm of the beautiful cruising region of Brittany and step back in time as you visit the medieval towns, châteaux and castles that line your route and captivate your cultural tastebuds.

“ We spent a glorious week exploring Brittany. We spent a lovely afternoon in the Forêt du Gavre and watched the sun go down over the pretty harbour at Foleux. ”

The temperate climate, long hours of sunshine and many beautiful parks with leisure and watersports amenities make this a perfect place to visit whatever the time of year. Importantly, you will discover a region where ancient customs continue today and traditional costumes are proudly worn at the many festivals celebrating Brittany's mythical and magical past.



- 12th century Chateau Blain and the Château des Rohan at Josselin
- Redon - the little Venice of Brittany
- The beautiful St-Pierre-St-Paul Cathedral at Nantes
- Messac's excellent tourist and sporting facilities
- Delicious crêpes and a jug of cider at waterside restaurants
- Good ferry links with the UK

The Artisan Cruise

Nort-sur-Erdre - La Gacilly - Nort-sur-Erdre

1 Week - Return trip
198kms • 34 locks • 38hrs



La Gacilly is a pretty flower-adorned town, home to artists and artisans and a delight to explore. Visit Redon - the Little Venice of Brittany - en route. The River Erdre makes for easy cruising and is perfect for beginners.

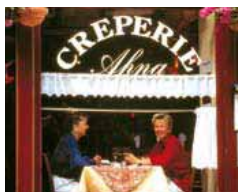
The Maritime Cruise

Nort-sur-Erdre - La Roche Bernard - Nort-sur-Erdre

1 Week - Return trip
196kms • 32 locks • 37hrs



Cruise to La Roche Bernard on the coast and wander the streets of this charming old town. You'll be rewarded with spectacular views over the River Vilaine.



Some cruising ideas to help you choose...

The Châteaux & Castles Cruise

Messac - Josselin - Messac

1 Week - Return trip
208kms • 36 locks • 36hrs



Take a walk around the stunning Yves Rocher botanical gardens and visit the famous beauty centre at La Gacilly. Enjoy a tour of Malestroit and discover the town's luxurious houses. Explore the grand Château at Josselin, considered the most beautiful in the region, and admire the houses clustered around the main square.

The Captial Cruise

Messac - Dinan or vice versa

1 Week - One-way trip
127kms • 57 locks • 30hrs



Follow the peaceful River Vilaine, stopping en route to visit the pretty town of Rennes, the capital of Brittany. Dinan is a perfect example of a medieval town on the banks of the River Rance. Its castle and 13th century ramparts are best viewed from the water. Plenty of opportunities exist along your route for on-shore fun; tennis and horse-riding at Betton, swimming at Lehon's open air swimming pool and picnics on the lake at Coubourg.

The Best of Brittany Cruise

Nort-sur-Erdre - Messac or vice versa

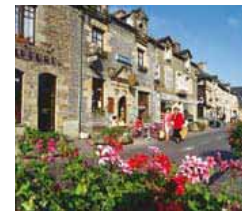
1 Week - One-way trip
260kms • 18 locks • 35hrs



Enjoy a week cruising on the River Erdre, one of the most beautiful rivers in France, the peaceful River Vilaine and the Canal de Nantes à Brest. Visit the chateau at Blain and sample some crisp cider in the cider factory at Guenrouët, where you can also play mini golf or tennis. Visit the beautiful city of Nantes and its splendid gothic cathedral.

Cruising Notes

Our relay base at Dinan is used to turn around boats on one-way cruises. Return- to-base cruises are not possible from Dinan.



The Napoleon Cruise

Messac - La Roche Bernard - Messac

4 Day - Short break
152kms • 4 locks • 20hrs



Pass under the iron bridge of Port de Roche, decorated with the seals of Napoleon and Eugénie and built for the Universal Exhibition in Paris in 1900. Visit Redon's shops and markets before arriving in the port of La Roche Bernard where you could try Breton Oysters at a quayside restaurant.



The Brittany Fleet

Match a boat to your choice of cruise

- Crown Blue Line Fleet
- CONNOISSEUR Fleet

Comfortably sleeping 8+

- Challenger, Classique, Grand Classique, Nautilia, Salsa
- Magnifique

Comfortably sleeping 6+

- Calypso, Condor, Crusader, Jamaica
- Normandie (1325FB B), Commodore Plus (Comm 1370 B), Traditional 1275 A, Continentale

Comfortably sleeping 4+

- Clipper, Comet, Corsair, Countess, Tango, Tasman
- Caprice, Traditional 1135D/E, Corvette B

Comfortably sleeping 2+

- Cirrus, Sheba
- Ha'Penny (900FB), Traditional 900

Please see pages 50-74 for more details

Let us quote you - special ferry rates available

www.europetravel.co.nz ph: 09 361 3661 info@europetravel.co.nz

Charente



The Charente, near St. Brice

The loveliest river in France



Discover the true spirit of France in this region famed for its fine cognac, delicious cuisine and Romanesque art and architecture. Waterfront towns and villages boast excellent restaurants and colourful local markets are a treat to explore. Beautiful country walks through woodland and sunflower fields, bike rides and an 18-hole golf course at Cognac all help to create a leisurely and relaxed holiday both on and off the water.

Known as the 'Loveliest River in France' the Charente meanders from its source in the Limousin through the gentle countryside of the Charente region until it reaches the Atlantic at Rochefort. You can choose to cruise in either direction from our base at Jarnac.

Cruising west towards the Atlantic at Rochefort, you'll see the world-renowned vineyards of Cognac and a visit to this elegant town and its famous distilleries such as Hennessy and Remy Martin,

is a must. Rochefort was built to house Louis XIVth's new Navy and remains an important and historic naval centre today. Enjoy the sea air and fabulous seafood restaurants!

Cruise east through the stunning Charente valley to the cathedral city of Angoulême, once home to the region's prosperous paper-making industry.

Whichever cruising direction you choose, you'll enjoy the unhurried

pace of life that is so evident in the towns and villages that line the riverbanks and fall in love with the ever-changing scenery that frames this truly beautiful river.



Regional highlights



- The Moulin de Fleurac at Nersac - traditional 18th century papermill
- The ramparts of Angoulême for stunning views
- Guided tours and tastings at Cognac's famous distilleries
- Saintes for Gallo-Roman ruins, amphitheatre and frescoes
- Ship-building and rope-making museums at Rochefort
- Great seafood restaurants

Some cruising ideas to help you choose...

The Fluviale Cruise

Jarnac - Angoulême - Jarnac

1 Week - Return trip

88kms • 30 locks • 22hrs



Explore the village of Bassac and its remarkable 1,000 year old abbey. Discover some of the finest Romanesque art in the region at the church of Saint-Pierre in Châteauneuf-sur-Charente. Cruise on to Mosnac and admire a gleaming collection of vintage cars. Pick up some tasty chocolates in Trois-Palis - a chocoholics heaven and enjoy a tasting at the town's chocolate factory.

Stop at Saint-Simeux - a former eel-farming centre in the Middle Ages and visit Saint Simon, the former heart of the region's boatbuilding industry and where the local 'gabares' - flat-bottomed sailing barges originally used for shipping barrels of cognac - are still used today for tourist trips on the river.

The 12th century Cathédrale St-Pierre dominates the thriving city of Angoulême; walk the ramparts for spectacular views over the Charente valley. France's only museum dedicated to cartoons - The Centre National de la Bande Dessinée et de l'Image can also be found here, alongside paper mills that still use 18th century techniques today.

Note: Only return-to-base cruises are possible from Jarnac



"We can now understand why the Charente is called the loveliest river in France. A cognac at the end of the evening became a regular occurrence!"

Cruising Notes

The Charente river runs a regular course and is easy to navigate. There are no lock keepers, so you will have to operate the locks yourself. From St. Savinien to Rochefort, the river becomes tidal. This part of your cruise requires extra attention to navigation.

The Cognac Cruise

Jarnac - Rochefort - Jarnac

1 Week - Return trip

186kms • 12 locks • 33hrs



Cruise to Saint Brice and visit its castle, which has a unique Renaissance façade. Relax with a picnic in the pretty park or tee off at the town's golf course on the banks of the river.

Catch the scent of cognac in the air at the elegant town of Cognac - the roofs on the houses are turned amber-coloured by the alcohol vapours in the air. Join a guided tour of the famous distilleries and enjoy free tasting sessions to help you decide to buy! Continue to Saintes and discover amazing archaeological finds including Roman columns, frescoes and statues. Visit the excellent maritime museum at Rochefort to learn about its historic sailing and rope-making past before dining on excellent seafood platters by the sea. The River Charente becomes tidal after St.Savinien.



The Charente Fleet

Match a boat to your choice of cruise

■ Crown Blue Line Fleet

Comfortably sleeping 8+

■ Grand Classique, Nautilla, Salsa

Comfortably sleeping 6+

■ Ariane, Calypso, Crusader, Jamaica, Orion

Comfortably sleeping 4+

■ Clipper, Tamaris, Viscount

Comfortably sleeping 2+

■ Capri, Cirrus, Sheba



Please see pages 50-74 for more details